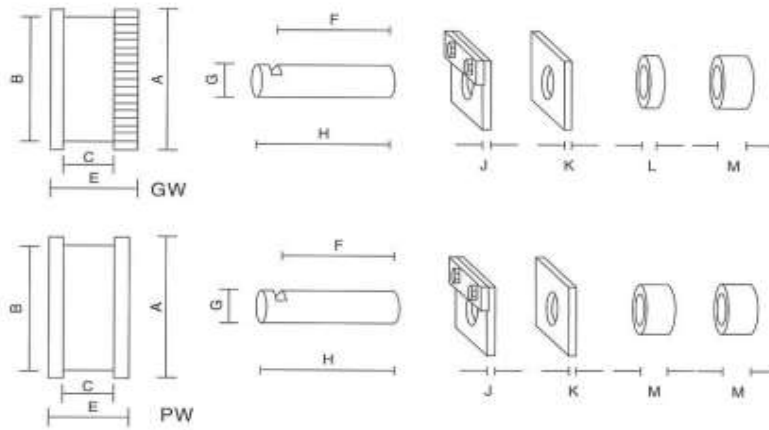




Crane Wheel



Crane End Carriage Wheel Specification

Model / Items	Bearing	Gear Teeth	Material	HRC Hardness	Wheel Load (Kgs)	Square Bar (mm)
GW/150 PW/150	6306Z	M3x48T	S45C	50 ± 5	2100	32
GW/180 PW/180	6308Z	M3x58T	S45C	50 ± 5	3200	38
GW/198 PW/198	6308Z	M3x64T	S45C	50 ± 5	4900	38
GW/248 PW/248	6309Z	M4x60T	S45C	50 ± 5	5700	44
GW/249 PW/249	6309Z	M3x81T	S45C	50 ± 5	5700	44
GW/280 PW/280	6310Z	M4x68T	S45C	50 ± 5	8100	44
GW/345 PW/345	6311Z	M5x67T	SC49	45 ± 5	9700	55
GW/432 PW/432	6314Z	M6x70T	SC49	45 ± 5	15000	55
GW/546 PW/546	6316Z	M6x89T	SC49	45 ± 5	19000	63

Dimensions (mm)

Model / Items	A	B	C	E	F	G	H	J	K	L	QTY (Pcs)	M	Weight (kg)
GW/150 PW/150	150	120	50	90	185	30	200	9	9	5	2	20	37
				75							2		
GW/180 PW/180	180	150	60	100	185	40	200	9	9	5	2	20	37
				85							2		
GW/198 PW/198	198	170	60	105	185	40	200	9	9	5	2	20	72
				90							2		
GW/248 PW/248	248	220	70	115	275	45	290	13	13	10	2	25	136
				100							2		
GW/249 PW/249	249	220	70	115	275	45	290	13	13	10	2	25	136
				100							2		
GW/280 PW/280	280	250	70	115	275	50	290	13	13	10	2	25	175
				100							2		
GW/345 PW/345	345	300	75	140	285	55	300	13	13	10	2	40	319
				110							2		
GW/432 PW/432	432	400	80	145	285	70	300	13	13	10	2	40	542
				120							2		
GW/546 PW/546	546	500	80	150	285	80	300	13	13	10	2	40	872
				120							2		